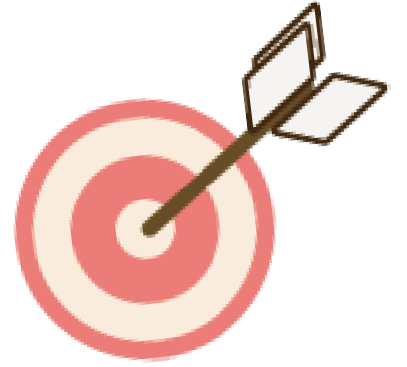


Partnering in the Health Journey

Managing chronic diseases requires participants to actively engage with their Family Doctors and the District Health Centre during treatment phase.

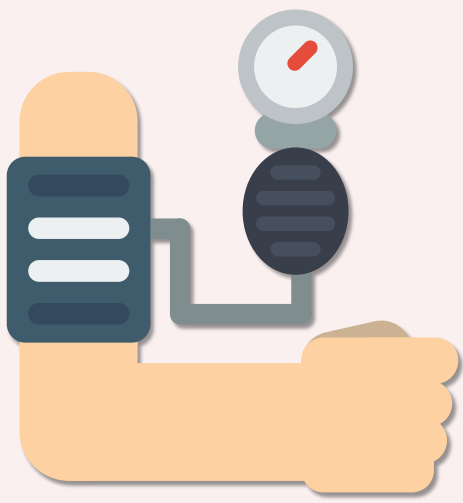
The Chronic Disease Co-Care Pilot Scheme has introduced a Doctor-patient Partnership Incentive Mechanism to encourage participants follow the advice of their family doctor to achieve better health outcomes.

Participants who achieve specific health incentive targets will enjoy a one-off reduction in co-payment fee up to \$150 for the first subsidised consultation in the following programme year.



***Please refer to the below listed eligible group**

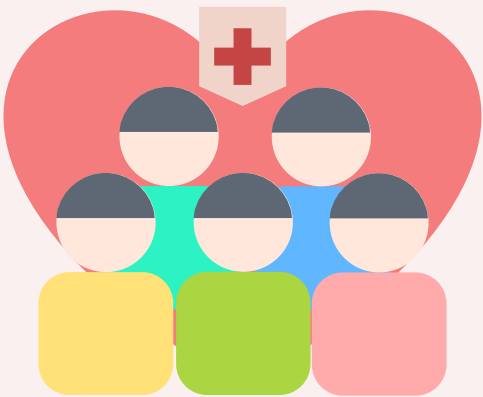
Incentive Target Parameters



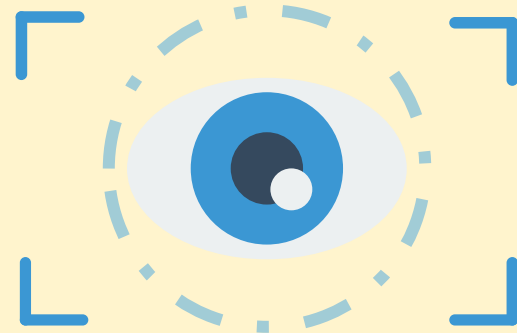
Conduct blood pressure monitoring and upload the results monthly



Visit Family Doctor every three months to regularly monitor the latest condition



Complete the **Patient Empowerment Programme** arranged by the District Health Centre



Participants with Diabetes Mellitus should complete **retinal photography examination arranged by the District Health Centre** annually

Details of Incentive Mechanism



Details of Incentive Target Parameters

- Hypertension & Pre-Diabetes 
- Hypertension 
- Hypertension & Diabetes Mellitus 
- Diabetes Mellitus 

You may enquire your Family Doctor or District Health Centre on your management programme. Also, you can visit the eHealth App "My Programme" to view your management programme and the parameters for achieving incentive targets.

